

JAZZ ENSEMBLE AUDITION MUSIC

SCALE (CONCERT B \flat BLUES)

A Rock $\text{♩} = 116-120$
C7

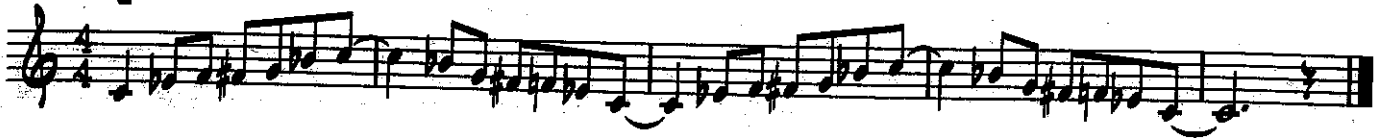


CHART EXCERPTS

B1 Rock $\text{♩} = 128-134$



B2 SWING BALLAD $\text{♩} = 104-108$

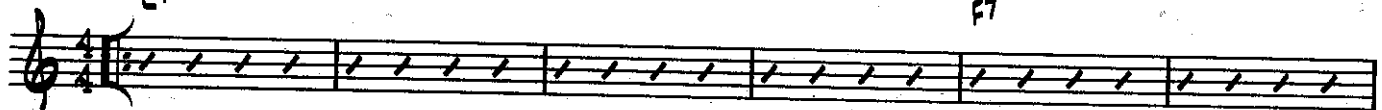


B3 SWING $\text{♩} = 120-126$



IMPROVISATION (optional)

C Rock $\text{♩} = 116-120$
C7



- For this excerpt, use track 9 of the RHYTHM STUDIES & IMPROVISATION STUDIES CD attached to the inside back cover of the *Standard of Excellence Jazz Ensemble Method Director Score*. Listen to the solo you hear the 1st time through. Improvise the 2nd, 3rd, and 4th times through using the solo you heard as a model. The notes of the blues scale at the top of this page (Excerpt **A**) are good pitches to use when improvising.

SIGHTREADING

- Director will choose excerpt at audition.

MISTY

1st B♭ TRUMPET

Words by JOHNNY BURKE
Music by ERROLL GARNER
Arranged by MIKE LEWIS

MOD. SLOW $\text{♩} = 76$

1 2 3 4 5 6 7 8 9 10 11 12 13 14 15 16 17 18 19 20 21 22 23 24 25 26 27 28 29 30 31 32 33 34 35

© 1954, 1955 (Copyrights Renewed)

REGANESQUE MUSIC, MARKE MUSIC PUBLISHING CO., INC., LIMERICK MUSIC CORP.,
TIMO-CO MUSIC and OCTAVE MUSIC PUBLISHING CORP.

This Arrangement © 1959 REGANESQUE MUSIC, MARKE MUSIC PUBLISHING CO., INC., LIMERICK MUSIC CORP.,
TIMO-CO MUSIC and OCTAVE MUSIC PUBLISHING CORP.
All Rights Reserved Including Public Performance for Profit

35 SOLI

35 36 37 38

39

39 40 41

UNIS.

42 43 44

47

45 46 47

48 49 50 51

52 53 54 55 56

57 58 59 60